



HOSPITEX DIAGNOSTICS

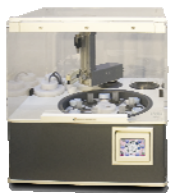
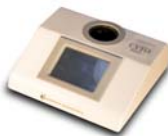


LBC - HPV

2012

LIQUID BASED CYTOLOGY




INSTRUMENTS

CODE	DESCRIPTION	PACK
LICY008 	CYTOfast SA allows preparation of monolayer slides, containing a standardized number of cells. Instrument can manage up to 6 samples at the same time, performing for all of them: automatic nephelometric reading, dispensing of determined sample quantity and fixative solution, balancing to the same total volume.	
LICY004 	CYTOfast M Is a manual instrument performing the nephelometric reading of the cellular density of samples. In manual method, operator manually performs the preparation of the slide for the centrifugation.	
LICY0001 	Multimixer Shaker Only specimens containing the brush, only once before their first processing, are mixed on the CYTOmultimixer shaker. Complete of 24 vials Tray (LICY0002), Cover for 24 vials tray (LICY0003) and Platform stabilizer (LICY0000).	
LICY0002	24 vials Tray	
LICY0003	Cover for 24 vials tray	
LICY0000	Platform stabilizer	
XHT1206 	Centrifuge Hettich ROTOFIX32A This Hettich model realizes aspecific centrifugation of cellular material, for a slide 100% representative of the sample collected.	
	ACCESSORIES for CENTRIFUGE:	
XHT1626	Rotor 6 places	1 pce
XHT1660	Chamber holder (6 pcs needed)	1 pce
XHT1662	Monolayer support (12 pcs needed)	1 pce
XHT1666	Cytology Chamber (8 ml) (100 pcs)	100 pcs


SAMPLE DEVICE COLLECTION

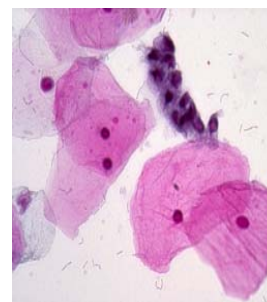
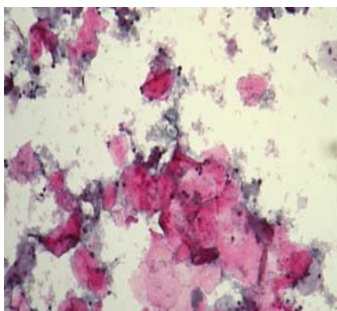
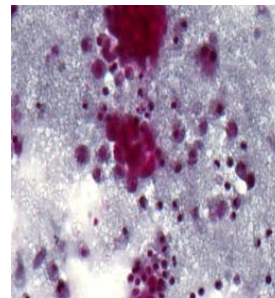
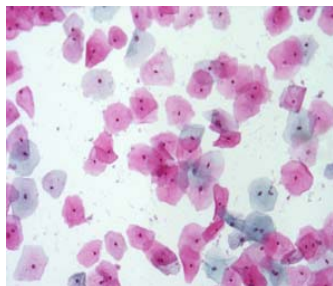
The removable head of the device is detached and placed in the vial containing **Cytofast** preservative solution, in order to collect 100% of the cellular material. The use of **Cytoprep®** is suggested with **Cytofast** method, although alternative collection devices can also be used.

CODE	DESCRIPTION	PACK
42100534 	CYTOprep Brush® Detachable head device: this combined brush consists of two parts : a central stem to gather endocervical cells and two types of hairs to sample the exo-cervical and junction cells. Provides a rich sample of ectocervical and T zone of the cervix. CE and FDA certified.	20x50 pcs

VIAL TEST SOLUTIONS for CYTOLOGY

Cytofast solution is an universal preservative liquid that allows to preserve cells up to 24 months at room temperature. It has light mucolytic and lysing effects on the preserved cellular material. **Cytofast** liquid allows different further investigations on the preserved cellular material, and it is suitable with PCR techniques and Hybrid Capture methods to detect HPV.

CODE	DESCRIPTION	PACK
42010600	CYTOfast Solution (17 ml/vial)	24 vials
		
42010601	CYTOfast Solution (17 ml/vial)	480 vials (20x24 vials)
42010602	CYTOfast Solution	1 Lt
42010603	CYTOfast Solution	265 tests
42100529	Stickeur Solution	1 Lt
42100540	Stickeur Solution	120 ml
42100519	Gradient Solution	5x10 ml
42100533	CYTOfast URINE KIT 8 boxes containing 3 centrifuge tubes filled with 17 ml of CYTOfast solution + 1 box containing 24 empty CYTOfast vials	8 x 3 x 17 ml





CONSUMABLES/ACCESSORIES

CODE	DESCRIPTION	PACK
30400022	Polylisine slides	72 pcs
42100518	CYTOfast SA tips - 2 ml	2x250 pcs/pack
30200035	Yellow Tips	1000 pcs/pack
30200040	Blue Tips	1000 pcs/pack
31100010	Variable Pipette 5-50 µl	1 pce
31100015	Variable Pipette 50-200 µl	1 pce
31100020	Variable Pipette 200-1000 µl	1 pce

HPV

HPV DNA Flow-through Platform and Direct-Flow Chip Kit. Screening and genotyping of human papillomavirus based on PCR amplification and reverse dot blot hybridization.

CODE	DESCRIPTION	PACK
00LIBM001	<p>e-BRID Automated DNA Flow-Through Hybridization platform proposing a strategy satisfying the need for a cheap, fast, easy and patient-friendly diagnostic tool able to detect the majority of the HPV infections.</p> 	1 pce
42500300	<p>HPV Direct-Flow Chip kit Each kit contains: 30 determinations Reagents for direct PCR: Extraction Buffer (1 x 1800 µl) - only for Paraffin embedded sections DNA release (1 x 50 µl) - only for Paraffin embedded sections 0,2 ml PCR tubes monotest format (30 x 53 µl PCR tubes). Phire® Hot Start II DNA polymerase* (1 x 30 µl) <i>*Trademark and license statements.</i> Reagents for Reverse dot blot hybridization: Reagent A: Hybridization solution 110 ml Reagent B: Blocking solution 18 ml Reagent C: Streptavidin-Alkaline Phosphatase 18 ml Reagent D: Washing buffer I 80 ml Reagent E-1: Substrate (a) 10 ml Reagent E-2: Chromogen (a) 10 ml Reagent F: Washing buffer II 80 ml HPV CHIP Spotted membranes 30 units <i>(a) The developing solution must be prepared just before use by mixing 1:1 the reagents E-1 and E-2.</i></p> 	1 pce
42500400	Tips 50-1250 µl	192 pcs



**HOSPITEX
DIAGNOSTICS**



Via Arno, 23/25
50019 OSMANNORO
SESTO FIORENTINO (FI)
-ITALY-

T
F
w
h