




ALTERNATIVE LIQUID BASED CYTOLOGY

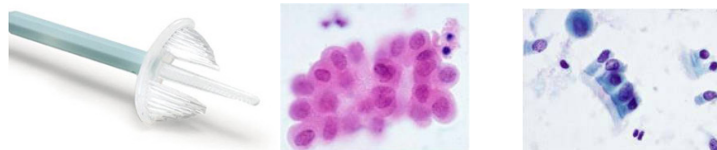
CATALOGUE 2010

LBC - CYTOFAST GYNECOLOGICAL LINE


SAMPLE COLLECTION

The removable head of the device is detached and placed in the vial containing **Cytofast** preservative solution, in order to collect 100% of the cellular material. The use of **Cytoprep®** is suggested with **Cytofast** method, although alternative collection devices can also be used.

CODE	DESCRIPTION	PACK
42100522	Cytoprep Brush® 	50 pcs
42100534	Detachable head device: this combined brush consists of two parts : a central stem to gather <u>endocervical</u> cells and two types of hairs to sample the exo-cervical and junction cells. Provides a rich sample of ectocervical and T zone of the cervix. CE and FDA certified.	20x50 pcs



CONSUMABLES/ACCESSORIES

CODE	DESCRIPTION	PACK
30400022	Polilysine slides 	72 pcs
42100518	CYTOFAST SA tips – 2 ml	2x250 pcs/pack
30200035	Yellow Tips	1000 pcs/pack
30200040	Blue Tips	1000 pcs/pack
31101500	Pipette Kit complete with 3 set pipette (1250/350/100 µl) and stand	1 kit
31101050	Pipette 1250 µl 	1 pce
31101030	Pipette 350 µl 	1 pce
31101005	Pipette 100 µl 	1 pce

VIAL TEST SOLUTIONS



Cytofast solution is an universal preservative liquid that allows to preserve cells up to 24 months at room temperature. It has light mucolythic and lysing effects on the preserved cellular material. **Cytofast** liquid allows different further investigations on the preserved cellular material, and it is suitable with PCR techniques and Hybrid Capture methods to detect HPV.

CODE	DESCRIPTION	PACK
42010600	CYTOFAST - preservative solution (17 ml/vial)	24 vials
42010601	CYTOFAST - preservative solution (17 ml/vial)	480 vials
42010602	CYTOFAST - preservative solution	1 Lt
42100529	Stickeur solution	1 Lt
42100540	Stickeur solution	120 ml
42100519	CYTOFAST Gradient solution	5x10 ml

KITS :



CODE : 42100600

LAB KIT

Contains	DESCRIPTION	PACK
1	CYTOFAST - preservative solution (17 ml/vial)	72 vials
1	Cytoprep Brush	72 pcs
1	Polilysine slides	72 pcs
1	Stickeur solution	120 ml



CODE : 42100650

GYN KIT




Contains	DESCRIPTION	PACK
1	CYTOFAST - preservative solution (17 ml/vial)	6 vials
1	Cytoprep Brush	6 pcs

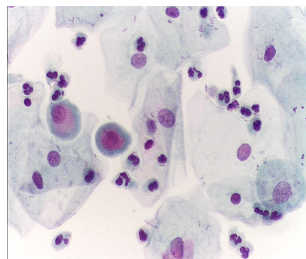
LBC - CYTOFAST URINE LINE



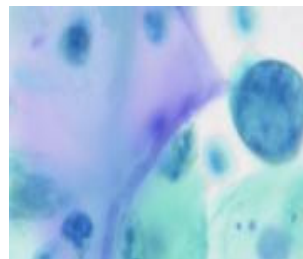
VIAL TEST SOLUTIONS

For urine specimens, cellular liquids are collected in the vial containing **Cytofast** solution without respecting any stoichiometric proportion.

CODE	DESCRIPTION	PACK
42019005	 CYTOFAST Vial empty vial (60 ml)	24 vials
42019000	 CYTOFAST Vial empty vial (60 ml)	72 vials
42010810	 CYTOFAST Falcon Tube 15 ml (5ml/tube) preservative solution containing	24 tubes
42010815	 CYTOFAST Falcon Tube 15 ml (5ml/tube) preservative solution containing	72 tubes
42010840	 CYTOFAST Falcon Tube 50 ml (17 ml/tube) preservative solution containing (17	24 tubes
42010850	 CYTOFAST Falcon Tube 50 ml (17 ml/tube) preservative solution containing (17	72 tubes
30400022	 Polilysine slides	72 pcs
42010602	CYTOFAST - preservative solution	1 Lt
42100529	Stickeur solution	1 Lt
42100540	 Stickeur solution	120 ml



Normal urine cells



Infected urine epithelial cells

KITS:



CODE : 42100800

URINE LAB KIT

Contains	DESCRIPTION	PACK
1	CYTOFAST Vial empty vial (60 ml)	72 vials
1	CYTOFAST Falcon Tube 15 ml containing (5ml/tube) preservative solution	72 tubes
1	Polilysine slides	72 pcs
1	Stickeur solution	120 ml



CODE : 42100850

URINE LAB KIT

Contains	DESCRIPTION	PACK
1	CYTOFAST Vial empty vial (60 ml)	72 vials
1	CYTOFAST Falcon Tube 50 ml containing (17ml/tube) preservative solution	72 tubes
1	Polilysine slides	72 pcs
1	Stickeur solution	120 ml




LBC - OTHER BIOLOGICAL FLUIDS



CYTO
fast

VIAL TEST SOLUTIONS


For other biological fluids, cellular liquids are collected in the vial containing Cytofast solution without respecting any stoichiometric proportion.

CODE	DESCRIPTION	PACK
42010600	CYTOFAST - preservative solution  (17 ml/vial)	24 vials
42010601	CYTOFAST - preservative solution  (17 ml/vial)	480 vials
42010602	CYTOFAST - preservative solution	1 Lt
42100529	Stickeur solution	1 Lt
42100540	Stickeur solution 	120 ml
30400022	Polilysine slides 	72 pcs

CYTOFAST INSTRUMENTATION

CYTO
fast

AGITATION

CODE	DESCRIPTION	UNIT
LICY0001	CYTO-Multimixer for shaking  to be ordered only together with the following indispensable accessories:	
LICY0002	24 vials Tray	
LICY0003	Cover for 24 vials tray	
LICY0000	Platform stabilizer	

STANDARDIZATION

CODE	DESCRIPTION	UNIT
LICY005	 <p>CYTOFAST Nephelometer for the determination of the cytological sample cellular density. This reading represents the standardization phase of Cytofast method. It is possible to obtain 50 slides per hour.</p>	
	 <p>CYTOFAST SA <i>NEW</i> Semi-automatic Nephelometer for the determination of the cytological sample cellular density. 2.5 tip for the sample aspiration. Two dispensers for the Cytofast preservative liquid and sticker solution. It is possible to obtain 100 slides per hour. <i>Available soon!</i></p>	

CENTRIFUGATION

CODE	DESCRIPTION	UNIT/PACK
XHT1206	 <p>CYTOcentrifuge ROTOFIX32A</p>	unit
	ACCESSORIES for CENTRIFUGE:	
XHT1626	Cytorotor	
XHT1660	Cyto Chamber holder (6 pcs needed)	1 pce
XHT1662	Cyto Monolayer support (12 pcs needed)	1 pce
XHT1666	Cytology Chamber (8 ml)	100 pcs
XHT1667	Cytology Triple Chamber (3x2 ml)	100 pcs
XHT1661	Cytology chamber plastic cover for HXT1660 (optional – 6 pcs needed)	1 pce
	Prices available upon request	


HPV (HUMAN PAPILLOMA VIRUS) DETECTION VIA PCR





EXTRACTION INSTRUMENTS :

CODE	DESCRIPTION	UNIT
HP000150	 <p>Microcentrifuge Compact, digital bench-top centrifuge with many additional benefits including an active lid cooling system and silent operation. Centrifuge functions are controlled by microprocessor, supervising all its safety protection features such as displayed imbalance cut-out and lid locking system.</p>	
HP000170	<p>Angle Rotor (included with Microcentrifuge) This rotor can be used for high speed centrifugation of max. 24 small samples in tubes ranging from 0.25 to 1.5 ml. The max. rotating speed is 13000 RPM (15120 RCF or g).</p>	
HP100200	 <p>Digital Dry Bath A broad temperature range (+5 to +150°C, temperature accuracy +0.3°C) makes this thermo-block useful for a variety of applications in molecular biology and clinical labs. Although the price of these baths is comparable to analogue models, they feature microprocessor control and digital setting/display of temperature. Stainless steel block chamber.</p>	


EXTRACTION KITS :

CODE	DESCRIPTION	PACK
42500100	 <p>DNA Extraction Kit Total (genomic and viral) DNA extraction kit from tissue (sections fixed or fresh/frozen) or cell suspensions.</p>	30 tests

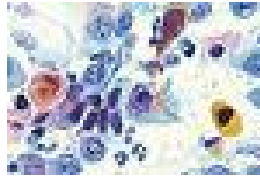
PCR AND DETECTION INSTRUMENTS :

CODE	DESCRIPTION	UNIT
HP300300	 <p>Thermal Cycler For PCR methods using tubes, strip wells or plates. Its high ramping rate and precision temperature control provides fast and accurate results. Extra large LCD display, user-friendly S/W interface, hot lid pressure and T adjustable.</p>	
HP300350	<p>TC Block (included with Thermal Cycler) For 0.2 ml standard centrifuge tubes (96 tubes) or half-skirted 96 well plate, can run gradient T programs (max. gradient of 30°C)</p>	
HP500100	 <p>Detection Device "Flow-through" Hybridization Technology: Unique manual platform for Membrane Array. Rapid analyses of any analyte in the Solution-Porous-Matrix System. Active approach to facilitate the annealing reaction between sample molecules (the targets) and capturing molecules (probes) which occur on three-dimensional porous matrixes rather than on planar surfaces.</p>	

PCR AND DETECTION KITS :

CODE	DESCRIPTION	PACK
42500200	 <p>HPV Screening and Genotyping Kit <small>CE</small> <i>For Research Use only!</i> HPV Screening and typing of 33 genotypes (18 HR and 15 LR). PCR amplifies L1 region using biotinylated primers and hybridization with oligo probes through the "Flow-through" hybridization process, followed by a stringent wash and a signal development stage.</p>	30 tests

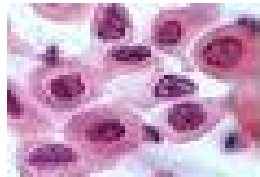
L B C - DETECTABLE GYN CELL SPECIMENS



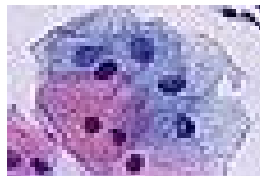
Cancer cells. Abnormal growth in cell indicated by enlarged and irregular nuclei with clumped chromatin. Bright yellow colour due to abnormal keratin changes in cytoplasm.



Squamous Koilocytes. Cells affected from STD HPV – causing a cytoplasm cavitation around the nucleus.



Dysplastic nucleic changes. Pre-cancerous. Irregular and enlarged nuclei compared to the normal cell nucleus.



Normal squamous cells



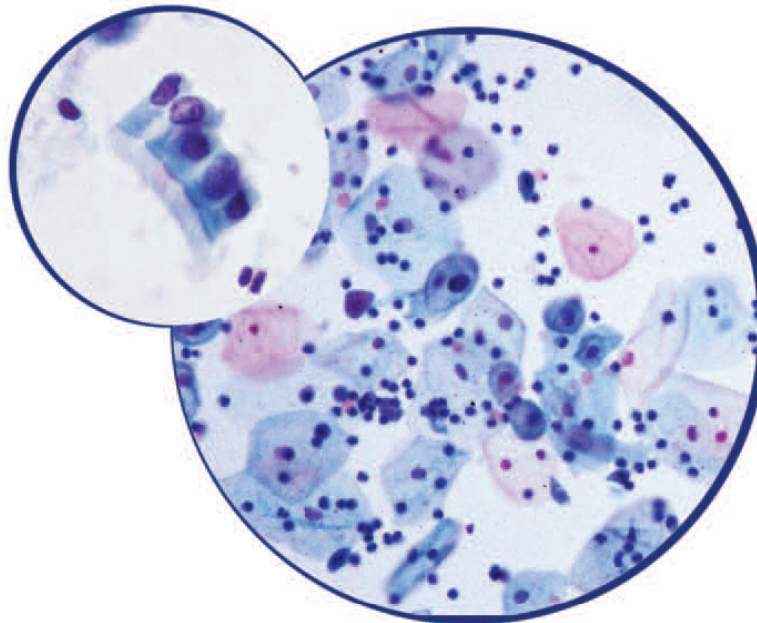
Squamous metaplasia. Overlapped squamous and endocervical cells become metaplastic.



Normal endocervical cells
inside of the cervix. Mucus producing.



HOSPITEX DIAGNOSTICS



CYTO-FAST SYSTEM
THE ALTERNATIVE THIN LAYER



**HOSPITEX DIAGNOSTICS s.r.l - Via Provinciale Lucchese, 145 – 50019 - Osmannoro – Sesto
F.no (FI) - ITALY**

Tel. +39 055 374083 Fax +39 055 374084 E-mail address: hospitex@hospitex.it

<http://www.hospitex.com>



**HOSPITEX
DIAGNOSTICS**

LIQUID BASED CYTOLOGY CATALOGUE 2009

CYTO
fast